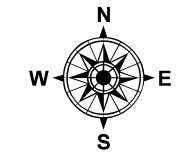




# Davao City Operations Center Covid-19



## COVID-19 RISK ASSESSMENT MAP

### Legend

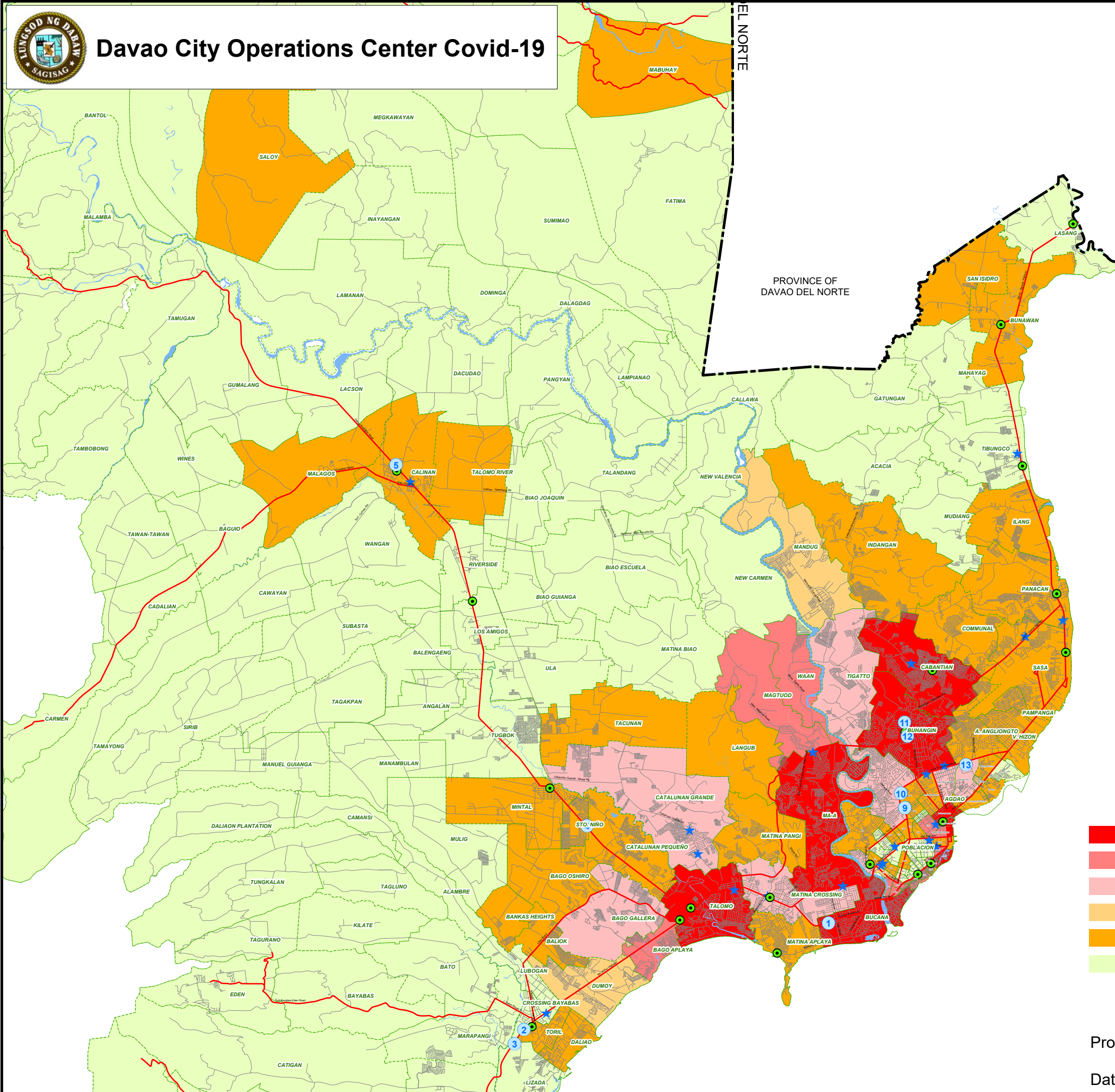
- National Road
- City/Barangay Road
- Davao City Boundary
- Administrative District Boundary barangay182
- Barangay Boundary
- Major Rivers
- Shoreline
- Supermarkets
- Public/Private Markets

### MALLS:

No	NAME
1	SM CITY
2	GAISANO MALL
3	GAISANO GRAND TORIL
4	GAISANO CAPITAL
5	GAISANO GRAND
6	FELCRIS CENTRALE
7	GAISANO SOUTH CITI MALL
8	GAISANO MALL OF DAVAO
9	NCCC MALL VICTORIA PLAZA
10	ABREEZA MALL
11	NCCC MALL
12	GAISANO GRAND CITYGATE MALL
13	SM LANANG PREMIER

- Very High Risk
- High Risk (due to neighboring Very High Risk barangay)
- High Risk
- Moderate Risk (due to neighboring High Risk barangay)
- Moderate Risk
- Low Risk

Processed by: City Planning and Development Coordinator Office  
 Geographic Information System (GIS) Unit  
 Date : June 4, 2020



Very High Risk Barangays [9]	High Risk Barangays [8]	High Risk Barangays (in close proximity to Very High Risk Barangays) [11]
22-C	5-A	1-A
23-C	19-B	15-B
Agdao Proper	Bago Gallera	25-C
Bucana	Catalunan Grande	26-C
Buhangin Proper	Matina Crossing	31-D
Cabantian	San Antonio	39-D
Leon Garcia	Tigatto	40-D
Maa	Wilfredo Aquino	Bago Aplaya
Talomo Proper		Magtuod
		Tomas Monteverde
		Waan

Moderate Risk Barangays [45]			
3-A	34-D	Daliao	Pampanga
6-A	37-D	Gov. Bangoy	Panacan
8-A	Angliongto	Gov. Duterte	Rafael Castillo
10-A	Bago Oshiro	Ilang	Saloy
11-B	Baliok	Indangan	San Isidro/Licanan
12-B	Bangkas Heights	Langub	Sasa
13-B	Bunawan Proper	Mabuhay (Paquibato)	Sto. Niño
14-B	Calinan Proper	Malagos	Tacunan
18-B	Catalunan Pequeño	Matina Aplaya	Talomo River
20-B	Centro (San Juan, Agdao)	Matina Pangi	Toril Proper
21-C	Communal	Mintal	Vicente Hizon, Sr.
27-C			

Moderate Risk Barangays (in close proximity to High Risk Barangays) [4]		Low Risk Barangays [105]
2-A	Mandug	All barangays not mentioned
Dumoy	Ubalde	

**Very High Risk**

Population Density > 800 & Active Cases ≥ 3

Population Density > 800 & Deaths > 2

Total Confirmed Cases ≥ 15

Attack Rate Per 1K Population > 2

Behavior Index<sub>a</sub> > 200

**High Risk**

Population Density ≤ 800 & Active Cases ≥ 3

Population Density ≤ 800 & Deaths > 2

7 ≤ Total Confirmed Cases < 15

Attack Rate Per 1K Population = 2

100 < Behavior Index<sub>a</sub> ≤ 200

Business Establishments<sub>b</sub> > 1200

**Moderate Risk**

Population Density ≤ 800 & 0 < Active Cases < 3

Population Density ≤ 800 & 0 < Death < 2

0 < Total Confirmed Cases < 7

Attack Rate Per 1K Population = 1

40 < Behavior Index<sub>a</sub> ≤ 100

535 < Business Establishments<sub>b</sub> ≤ 1200

**Low Risk**

All Barangays Not Mentioned

<sup>a</sup>Behavior Index comprises Number of ECQ Violations and Number of 911 Calls Responded that can influence going out/crowding of persons

<sup>b</sup>Business Establishments refer to business establishments projected to open in GCQ