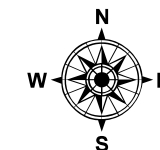




# Davao City Operations Center Covid-19



## COVID-19 RISK ASSESSMENT MAP

### Legend

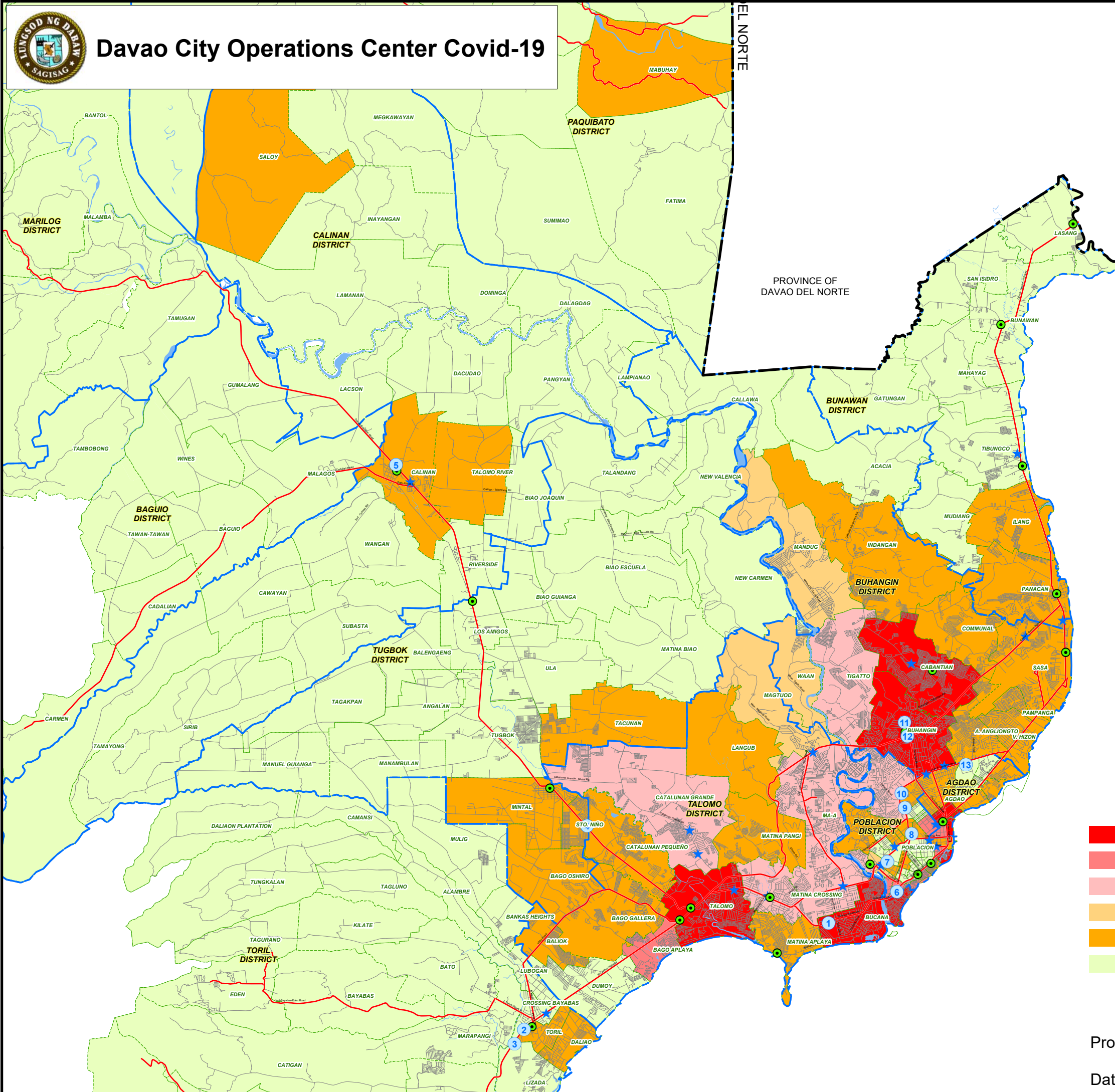
- National Road
- City/Barangay Road
- Davao City Boundary
- Administrative District Boundary
- Barangay Boundary
- Major Rivers
- Shoreline
- Supermarkets
- Public/Private Markets

### MALLS:

No	NAME
1	SM CITY
2	GAISANO MALL
3	GAISANO GRAND TORIL
4	GAISANO CAPITAL
5	GAISANO GRAND
6	FELCRIS CENTRALE
7	GAISANO SOUTH CITI MALL
8	GAISANO MALL OF DAVAO
9	NCCC MALL VICTORIA PLAZA
10	ABREEZA MALL
11	NCCC MALL
12	GAISANO GRAND CITYGATE MALL
13	SM LANANG PREMIER

- Very High Risk
- High Risk (due to neighboring Very High Risk barangay)
- High Risk
- Moderate Risk (due to neighboring High Risk barangay)
- Moderate Risk
- Low Risk

Processed by: City Planning and Development Coordinator Office  
 Geographic Information System (GIS) Unit  
 Date : May 24, 2020



Very High Risk Barangays [7]	High Risk Barangays [6]	High Risk Barangays (in close proximity to Very High Risk Barangays) [8]
23-C	5-A	1-A
Agdao Proper	19-B	15-B
Bucana	Catalunan Grande	26-C
Buhangin Proper	Maa	31-D
Cabantian	Matina Crossing	39-D
Leon Garcia	Tigatto	40-D
Talomo Proper		Bago Aplaya
		Kapt. Monteverde, Sr.

Moderate Risk Barangays [41]			
3-A	34-D	Gov. Bangoy	Pampanga
8-A	Angliongto	Gov. Duterte	Panacan
10-A	Bago Gallera	Ilang	Saloy
11-B	Bago Oshiro	Indangan	Sasa
12-B	Baliok	Langub	Sto. Niño
13-B	Calinan Proper	Lapu-lapu	Tacunan
14-B	Catalunan Pequeño	Mabuhay (Paquibato)	Talomo River
20-B	Centro (San Juan, Agdao)	Matina Aplaya	Toril Proper
21-C	Communal	Matina Pangi	Vicente Hizon, Sr.
22-C	Daliao	Mintal	Wilfredo Aquino
27-C			

Moderate Risk Barangays (in close proximity to High Risk Barangays) [5]		Low Risk Barangays
2-A	Mandug	All barangays not mentioned
6-A	Waan	
Magtuod		

### Very High Risk

Population Density > 800 & Active Cases  $\geq$  3  
 Total Confirmed Cases  $\geq$  10  
 Attack Rate Per 1K Population > 2  
 Behavior Index<sub>a</sub> > 200

### High Risk

Barangays in Close Proximity to Very High Risk Barangays  
 Population Density  $\leq$  800, Active Cases  $\geq$  3  
 $7 \leq$  Total Confirmed Cases < 10  
 Attack Rate Per 1K Population = 2  
 $100 <$  Behavior Index<sub>a</sub>  $\leq$  200  
 Business Establishments<sub>b</sub> > 1200

### Moderate Risk

Barangays in Close Proximity to High Risk Barangays  
 Population Density  $\leq$  800,  $0 <$  Active Cases < 3  
 $0 <$  Total Confirmed Cases < 7  
 Attack Rate Per 1K Population = 1  
 $40 <$  Behavior Index<sub>a</sub>  $\leq$  100  
 $535 <$  Business Establishments<sub>b</sub>  $\leq$  1200

### Low Risk

All Barangays Not Mentioned

<sup>a</sup>Behavior Index comprises Number of ECQ Violations and Number of 911 Calls Responded that can influence going out/crowding of persons

<sup>b</sup>Business Establishments refer to business establishments projected to open in GCQ