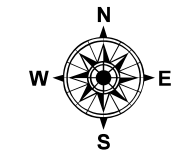




Davao City Operations Center Covid-19



COVID-19 RISK ASSESSMENT MAP

Legend

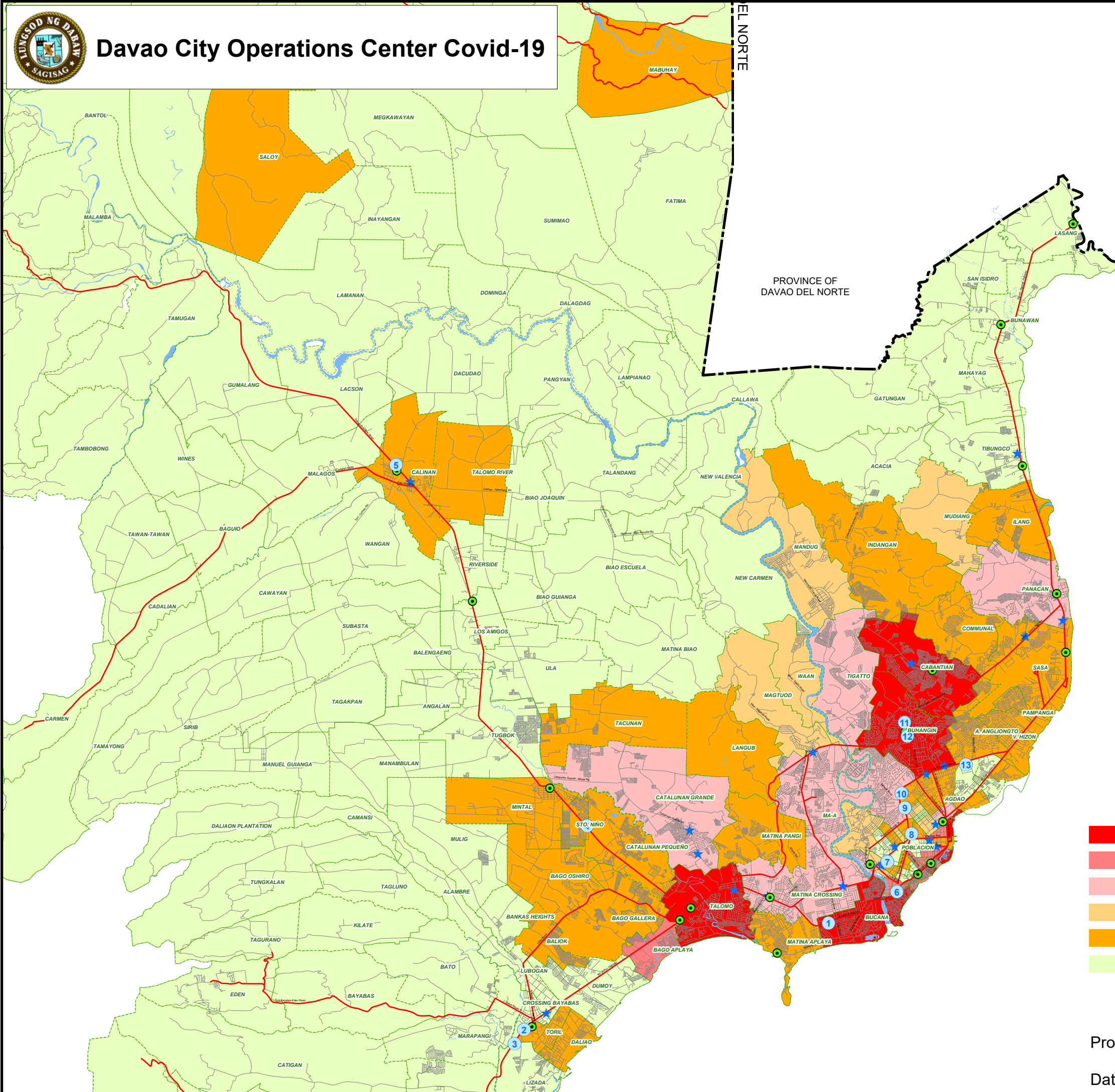
- National Road
- City/Barangay Road
- Davao City Boundary
- Administrative District Boundary
- Barangay Boundary
- Major Rivers
- Shoreline
- ★ Supermarkets
- Public/Private Markets

MALLS:

No	NAME
1	SM CITY
2	GAISANO MALL
3	GAISANO GRAND TORIL
4	GAISANO CAPITAL
5	GAISANO GRAND
6	FELCRIS CENTRALE
7	GAISANO SOUTH CITI MALL
8	GAISANO MALL OF DAVAO
9	NCCC MALL VICTORIA PLAZA
10	ABREEZA MALL
11	NCCC MALL
12	GAISANO GRAND CITYGATE MALL
13	SM LANANG PREMIER

- Very High Risk
- High Risk (in close proximity to Very High Risk barangays)
- High Risk
- Moderate Risk (in close proximity to High Risk barangays)
- Moderate Risk
- Low Risk

Processed by: City Planning and Development Coordinator Office
 Geographic Information System (GIS) Unit
 Date : May 18, 2020



Very High Risk Barangays [7]	High Risk Barangays [8]	High Risk Barangays (in close proximity to Very High Risk Barangays) [12]	
21-C	5-A	1-A	31-D
23-C	19-B	22-C	32-D
Bucana	Agdao Proper	24-C	37-D
Buhangin Proper	Catalunan Grande	25-C	39-D
Cabantian	Maa	26-C	40-D
Leon Garcia	Matina Crossing	28-C	Tomas Monteverde
Talomo Proper	Panacan		
	Tigatto		

Moderate Risk Barangays [35]			
3-A	Bago Gallera	Ilang	Saloy
10-A	Bago Oshiro	Indangan	Sasa
12-B	Baliok	Langub	Sto. Nino
13-B	Calinan Proper	Lapu-lapu	Tacunan
14-B	Catalunan Pequeño	Mabuhay	Talomo River
20-B	Communal	Matina Aplaya	Toril Proper
27-C	Daliao	Matina Pangi	Vicente Hizon, Sr.
34-D	Gov. Bangoy	Mintal	Wilfredo Aquino
Angliongto	Gov. Duterte	Pampanga	

Moderate Risk Barangays (in close proximity to High Risk Barangays) [10]		Low Risk Barangays [110]
2-A	18-B	All barangays not mentioned
6-A	Magtuod	
8-A	Mandug	
11-B	Mudiang	
15-B	Waan	

Very High Risk

- Population Density > 800 & Active Cases ≥ 3
- Total Confirmed Cases ≥ 10
- Attack Rate Per 1K Population > 2
- Behavior Index^a > 200

High Risk

- Barangays in Close Proximity to Very High Risk Barangays
- Population Density ≤ 800, Active Cases ≥ 3
- 7 ≤ Total Confirmed Cases < 10
- Attack Rate Per 1K Population = 2
- 100 < Behavior Index^a ≤ 200
- Business Establishments^b > 1200

Low Risk

All Barangays Not Mentioned

Moderate Risk

- Barangays in Close Proximity to High Risk Barangays
- Population Density ≤ 800, 0 < Active Cases < 3
- 0 < Total Confirmed Cases < 7
- Attack Rate Per 1K Population = 1
- 40 < Behavior Index^a ≤ 100
- 535 < Business Establishments^b ≤ 1200

^aBehavior Index comprises Number of ECQ Violations and Number of 911 Calls Responded that can influence going out/crowding of persons

^bBusiness Establishments refer to business establishments projected to open in GCQ